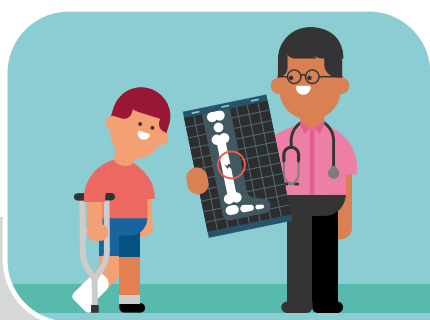


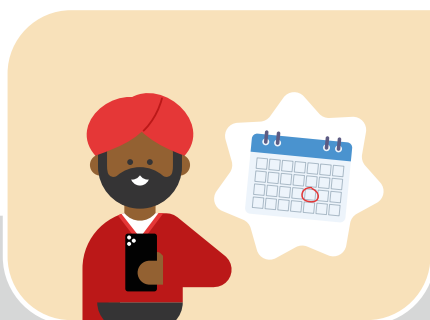
# Your online health records



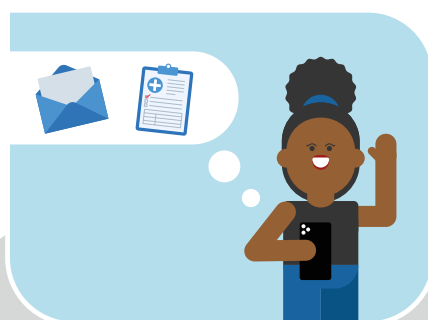
X-ray and  
scan reports



Blood test results



Appointments



Letters and  
discharge summaries



Adults, children, and young people can sign up on the Care Information Exchange [website](http://www.careinformationexchange-nwl.nhs.uk) [www.careinformationexchange-nwl.nhs.uk](http://www.careinformationexchange-nwl.nhs.uk)



Adults can also sign up on the [NHS app](#)



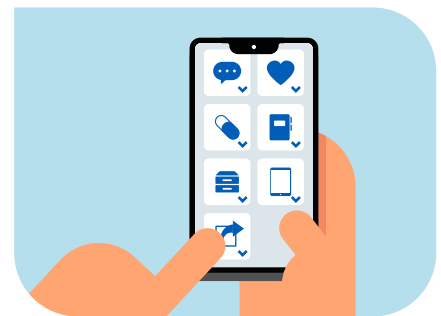
# Key details of your care. All in one place.

The Care Information Exchange gives you secure online access to your hospital health records.

- View your blood test results
- Read your X-ray and scan reports
- Find your letters, discharge summaries, and appointments

**You can add** information such as symptoms and fill in questionnaires.

**You can share** your health records with your family and carers if you want to.



The Care Information Exchange is powered by  
**Patients Know Best.**



## How do I sign up?

**Adults, children, and young people** can sign up on the Care Information Exchange **website**  
[www.careinformationexchange-nwl.nhs.uk](http://www.careinformationexchange-nwl.nhs.uk)

**Adults** can also sign up on the **NHS app**.

